

FOR SALE

3380 Highway 86, Calera, AL 35040



SPECIAL FEATURES:

75 +/- Acres

4500 sq. ft. +/- Home with wrap around porch

Rustic Log Cabin

5000 +/- Office/Warehouse

Large Barn

SALES PRICE: \$1,300,000.

RealtySouth

Shelby Commercial Division
3170 Highway 31 South
Pelham, Alabama 35124

COMMERCIAL



Debbie Seale

Direct Line: 205-620-2712
Voice Mail: 205-244-0162

FOR SALE

**3380 Highway 86
Calera, AL 35040**

Sales Price: \$1,300,000.

P.I.D. 34-2-04-0-000-006.001

Zoned: A-1 (Unincorporated Shelby County)

Home: 4500 sq. ft. +/-

- 5 Bedrooms, 3 ½ Baths, 2 Kitchens, LR, DR
- 10 ft. Wrap Around Porch

Office/Warehouse:

- 5000 sq. ft.
- 5 roll up doors: 3 (12 x12), 2 (10 x12)

Acreage:

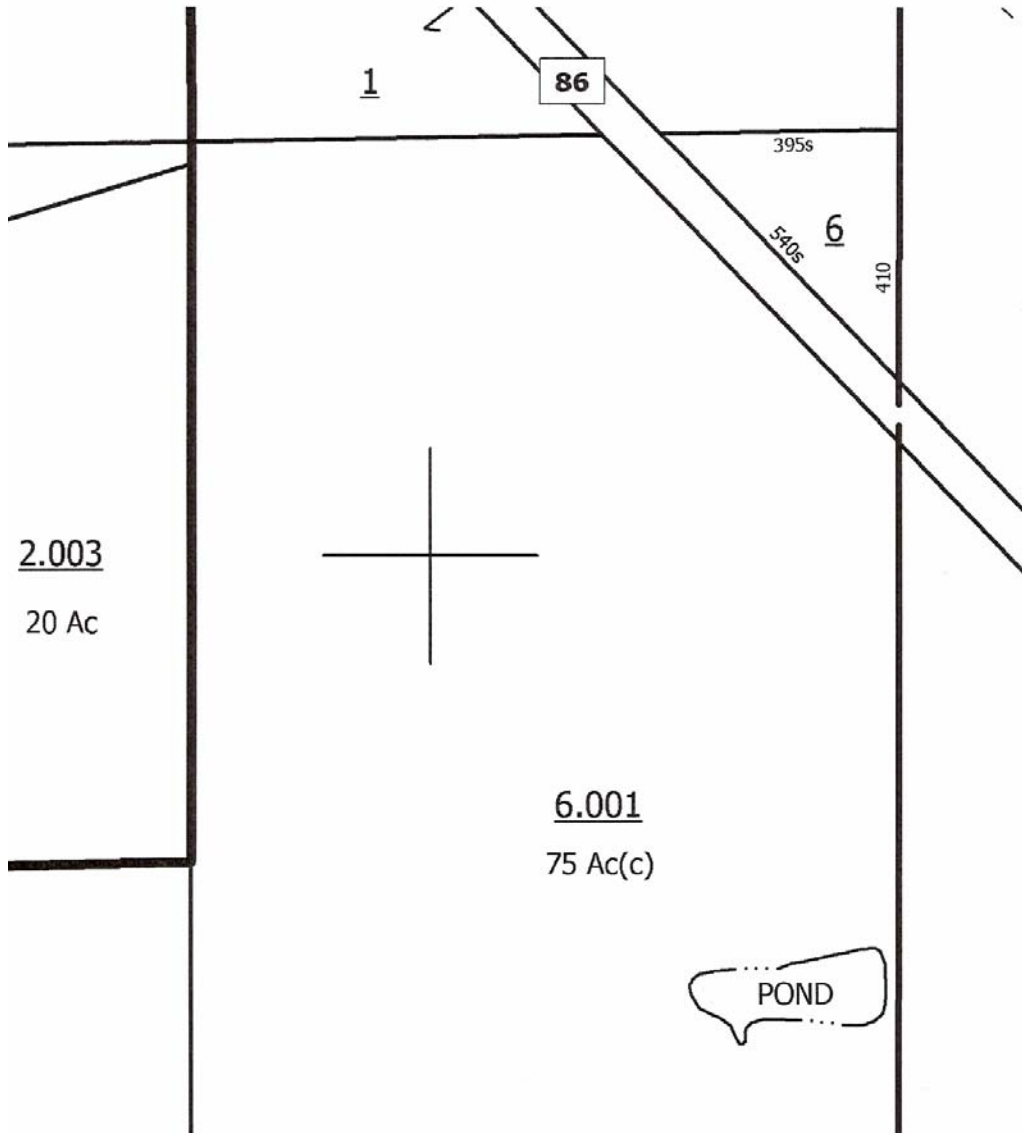
- 75 +/- Acres
- Fenced
- Approximately ½ in Pasture, ½ Wooded

Utilities Available: Electricity, Water

Special Features:

- **Only 5 miles from I-65, exit 228**
- **Excellent Opportunity to Run a Business from Home**
- **Rustic Log Cabin**
- **Large Barn**

Directions: From Birmingham take I-65 south to Calera exit, 228 . Turn left onto Hwy 25. Go approximately 1.6 miles and make a right onto Hwy 86. Go approx. 3.3 miles and look for property on right.



RealtySouth

Shelby Commercial Division
 3170 Highway 31 South
 Pelham, Alabama 35124

COMMERCIAL



Debbie Seale

Direct Line: 205-620-2712
Voice Mail: 205-244-0162

All information herein from sources deemed reliable; however, Purchaser should verify all information. RealtySouth and or its Agents are not responsible for any errors and/or omissions, change of price or terms, prior sale or lease, or withdrawal without notice.